



How to use VBox Android TV Gateway as a standalone Gateway

The VBox Android TV Gateway device allows you to use it as a stand-alone TV Gateway device, recasting and recording Live TV to all connected and mobile devices, or connect it to your TV via HDMI and use it as Android TV interface device.

How to set up VBox Android TV Gateway as Gateway

Device set up

Step 1: Connect the VBox device to all cables according to the instructions.

Step 2: From a computer connected to the same router open Network folder.

Step 3: Open the web management on browser- Network>Media Devices>Your VBox device>double click or right click>View device webpage (figure 1 below).

Step 4: Quick Setup – when in the web management chose the Quick Set Up option to configure your device. Follow the steps on screen- System setup, Tuners setup (on SAT), Scan, Channels setup and Recording setup (figure 2 below).

After device set up

Step 5: Download the “VBox Live TV” app on your selected devices (PC, Mobile, Tablet, Game consul) available on the iOS, Android and Windows 10 Play Stores.

Step 6: Now you are ready to use the VBox Android TV Gateway and enjoy broadcast live TV channels on your devices across your home network.

Figures:

Figure 1

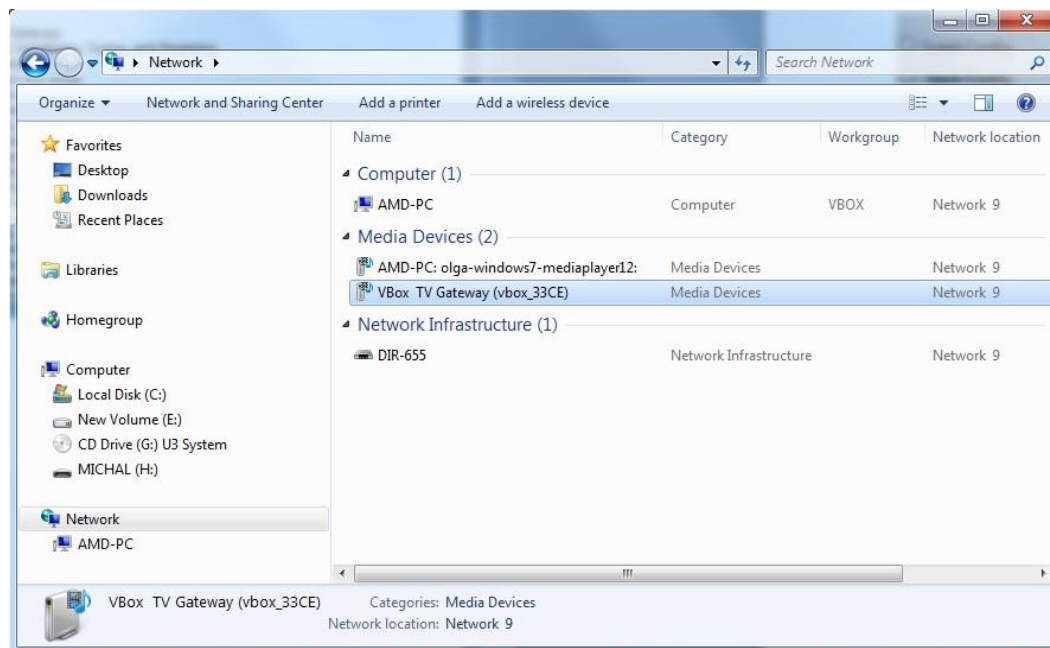


Figure 2

