



How to manage logos guide

VBox allows you to choose and customize your favorite logo for each channel. After you have scanned and set up your channels, you can now add logos to selected TV channels.

Note: Please make sure you have a recording media device (USB/Network NAS/SD Card) and a recording path set.

Step 1: To make the process simple, we recommend you to create and prepare a folder on your computer in advance and place your desired logo files in it. Or you can use the logo folder found on your media recording device and save the logos into it.

Step 2: Go to the Web management using browser: Network>Media Devices>Your VBox device>double click or right click>View device webpage (figure 1 below).

Step 3: At the menu go to: Streaming>Manage Logos (figure 2 below).

Step 4: Drag & Drop or Click the upload button and select your logo files from the logo folder you prepared to the 'Logo List' (figure 3 below). Or you can copy the files directly to the "icons" folder under recording path.

Step 5: Now you can link between the channels and the logos (figure 4 below).

Figures:

Figure 1

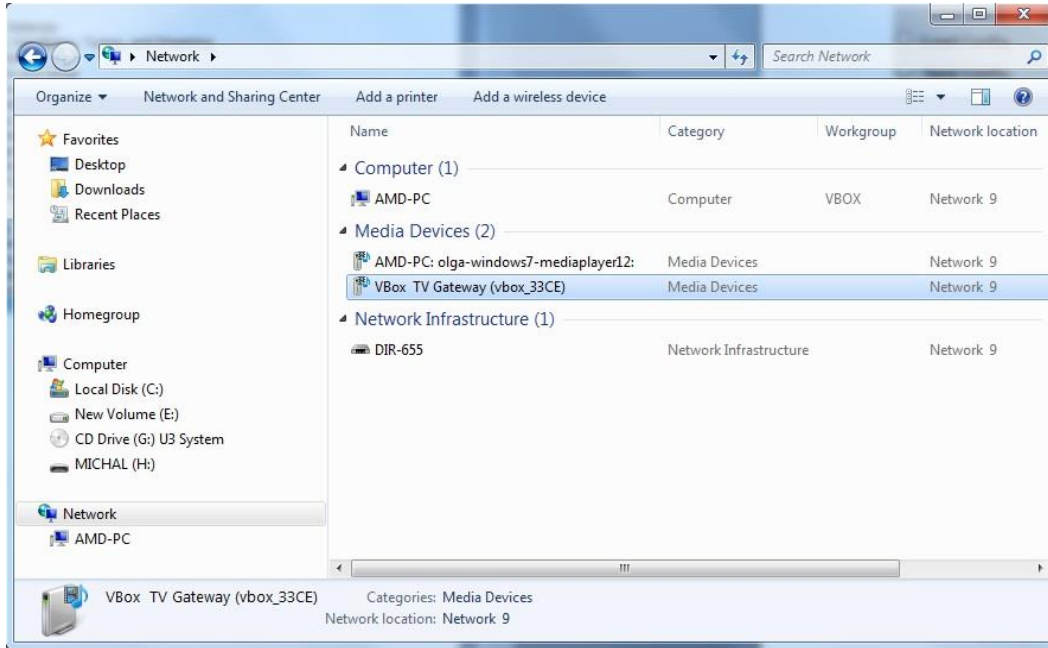


Figure 2

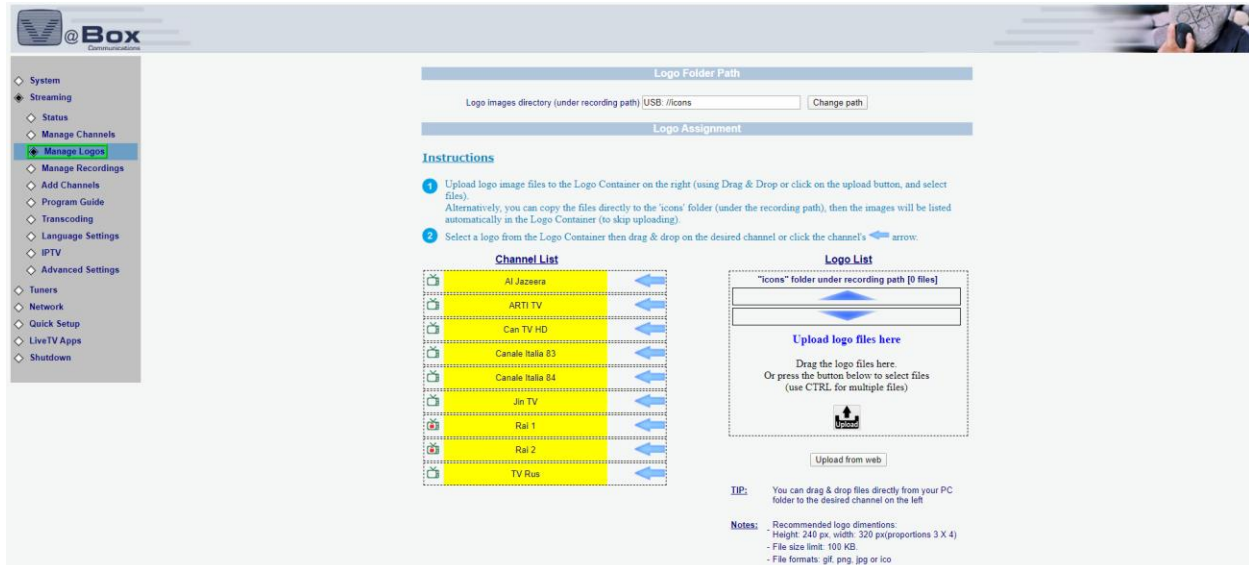


Figure 3

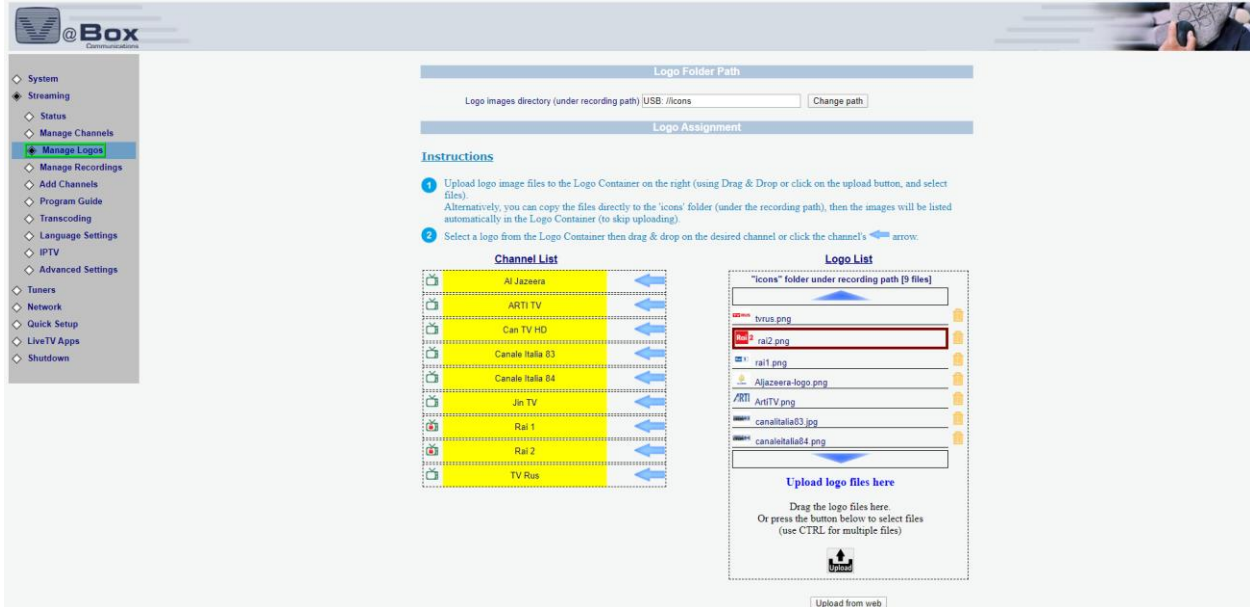


Figure 4

